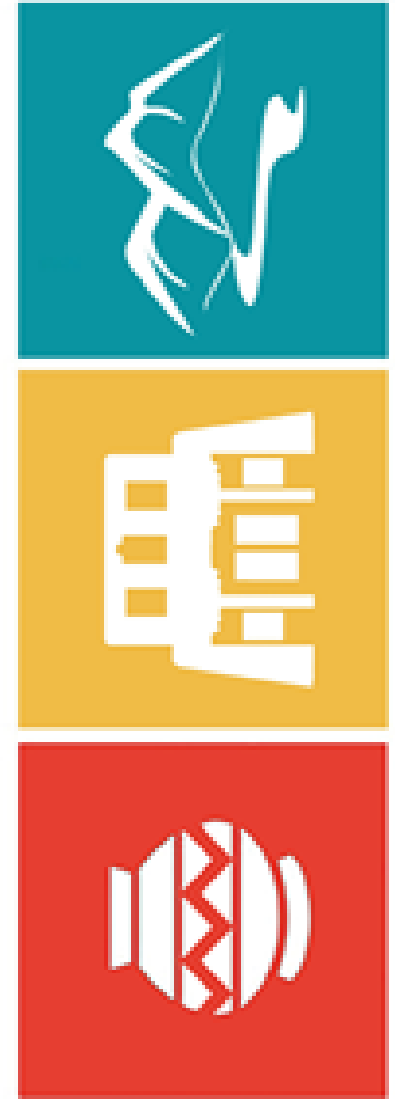


# The Santa Fe County Community Resources Informational Webinar Will begin shortly

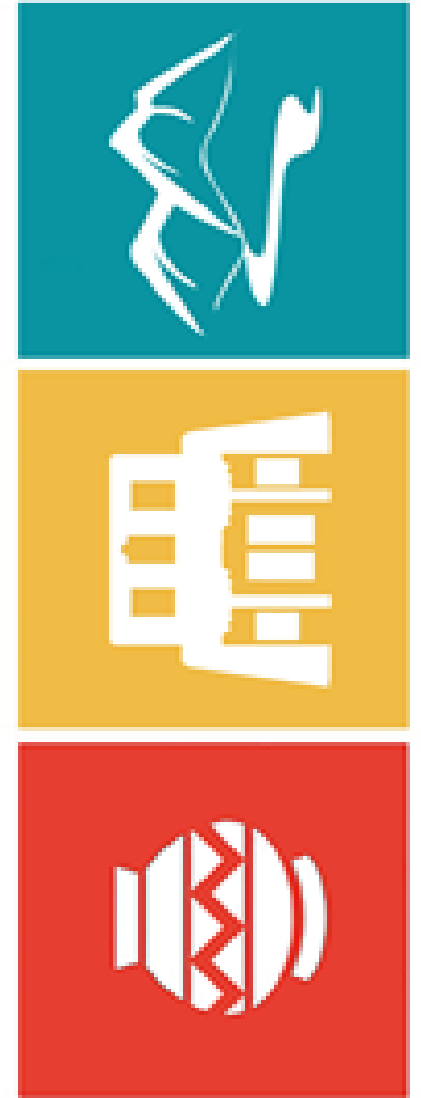


**SANTA FE** COUNTY

# Santa Fe County Community Resources Informational Webinar

July 21 and 29, 2020

Jacob Stock, [jlstock@santafecountynm.gov](mailto:jlstock@santafecountynm.gov)



**SANTA FE COUNTY**

## County Staff

- Jacob Stock, Community Planner
- Lucy Foma, Senior Planner
- Alex Fitzgerald, Economic Development Specialist
- Sonora Rodriguez, Community Planner
- Robert Griego, Planning Manager
- Paul Olafson, Planning Projects Manager
- Daniel Fresquez, Media Coordinator

## In This Presentation

- Covid-19 Impact on Santa Fe County and residents
- Details on critical resources for County residents
- Links to other relevant resources
- Information on public participation

## Covid-19 Impact on Santa Fe County

- 524 confirmed cases and growing (July 29, 2020)
- 9.5% unemployment rate (June 2020)
- 8% reduction in County budget
- Anticipated loss of revenue and state capital outlay
- Unknown long-term public health and economic impact

# Resources for Santa Fe County Residents

- Community support
- Agriculture
- Economic development
- Community infrastructure development



## Lucy Foma, Senior Planner

- Community and Food Systems Planning
- [lfoma@santafecountynm.gov](mailto:lfoma@santafecountynm.gov)
- (505) 995-2735

## Santa Fe CONNECT

- Connects City/County residents with public services including food, housing, medical assistance, and more
- Designed for any resident needing help
- No requirements; sign up on the website to get connected with a “Navigator”
- <https://www.santafecountynm.gov/connect>;  
Jennifer Romero (505) 995-9525



**CONNECT**  
A NETWORK CONNECTING  
SANTA FE CITY AND COUNTY  
RESIDENTS TO RESOURCES

The CONNECT network allows people access to crucial services to support their well-being. County and City residents can communicate with community-based navigators who can assist them with non-medical social needs such as:

- HOUSING
- FOOD ASSISTANCE
- EMPLOYMENT
- UTILITIES
- RELIABLE TRANSPORTATION
- AND MORE

Navigators are community health workers, volunteers, or social workers who link people to services and resources in our community. They are ready to help!

**TO ACCESS CONNECT SERVICES:**  
Visit [santafecountynm.gov/connect](https://santafecountynm.gov/connect) or [santafenm.gov/connect](https://santafenm.gov/connect) and complete a short questionnaire. Services are free and confidential.

Additional resources are available to support residents and businesses through the COVID-19 pandemic. To learn more, visit [AllTogetherSantaFe.org](https://AllTogetherSantaFe.org).

**SANTA FE COUNTY**

A Santa Fe County and City of Santa Fe community partnership.



**CONNECT**  
UNA RED CONECTANDO A  
RESIDENTES DEL CONDADO Y  
CIUDAD DE SANTA FE A RECURSOS

La red de CONNECT permite a individuos a acceder servicios cruciales que apoyan a su bienestar. Residentes del condado y de la ciudad de Santa Fe se pueden comunicar

Vivienda estable, utilidades, transporte, acceso a alimentos, servicios de salud, y sentirse seguro llevan a UNA MEJOR SALUD y BIENESTAR.

Please Note:

Filling out this assistance request form means you're asking to be connected to a service provider in your area who's able to meet a social or medical need that you or someone in your care may have. Once completed, this form is sent to the coordination center in the region where you'd like to receive care or services, and someone from that coordination center will contact you within two business days. The information you enter is completely confidential and there is no cost for this service.

Please use this form only to request services for yourself or a child (under 18 years old) or adult for whom you have legal guardianship. Consent submitted through this form should be signed by the person who would be receiving services or by their parent or legal guardian only.

Please choose a primary need and describe any additional needs in the request for services box below.

What services are you seeking? \*

- Food Assistance
- Food Assistance
- Housing & Shelter
- Income Support
- Individual & Family Support
- Legal
- Mental/Behavioral Health
- Money Management
- Physical Health
- Social Enrichment
- Sports & Recreation

## COVID Relief Effort – Meals and Groceries

- County and partners distributed 18,000 meals in May and June across 12 County-wide locations every week
- Distributed over 1,200 boxes of groceries across five locations weekly in June
- Continuing to provide groceries in July until foreseeable future
- [https://www.santafecountynm.gov/community\\_services/hhsd/ahc](https://www.santafecountynm.gov/community_services/hhsd/ahc); Jennifer Romero (505) 995-9525

## Schedule of Locations for FREE Meals & Groceries

### Tuesdays

Pojoaque - meals and grocery boxes  
Pojoaque Satellite Office  
5 West Gutierrez, Suite 9 Pojoaque Pueblo Plaza  
3:00-4:00 p.m.

### Wednesdays

La Cienega - meals and grocery boxes  
El Rancho de las Golondrinas  
334 Los Pinos Road  
Santa Fe, NM 87507  
3:00-4:00 p.m.

### Thursdays

Nambe - grocery boxes  
Nambe Community Center  
180 A SR 503, Nambe  
3:00-4:00 p.m.

For more information on services provided by the County and City, please visit the Santa Fe County/[City](#) CONNECT program online or the [AllTogetherSantaFe.org](#) page.

## Other Community Support Resources

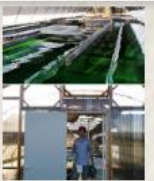
- Information for Individuals Experiencing Financial Hardship
  - <https://www.newmexico.gov/i-need-assistance/>
- Covid-Safe Practices for Individuals and Employers
  - <https://www.newmexico.org/industry/rapid-response-covid-19/covid-safe-practices/>
- Resources for dealing with Covid
  - <https://cv.nmhealth.org/>

## AgriGate

- Platform connecting local food producers with food buyers
- Created to help food producers find local markets for their products
- Any producer can sign up and create a profile; anyone from the public can access
- [www.agrigatesfc.org](http://www.agrigatesfc.org) ; Lucy (505) 995-2735



[Food Community Map](#) | [Food Producers](#) | [Food Buyers](#) | [Resource Providers](#) | [Stories](#) | [Join AgriGate](#)



**APOGEE  
SPIRULINA »**

Santa Fe, NM



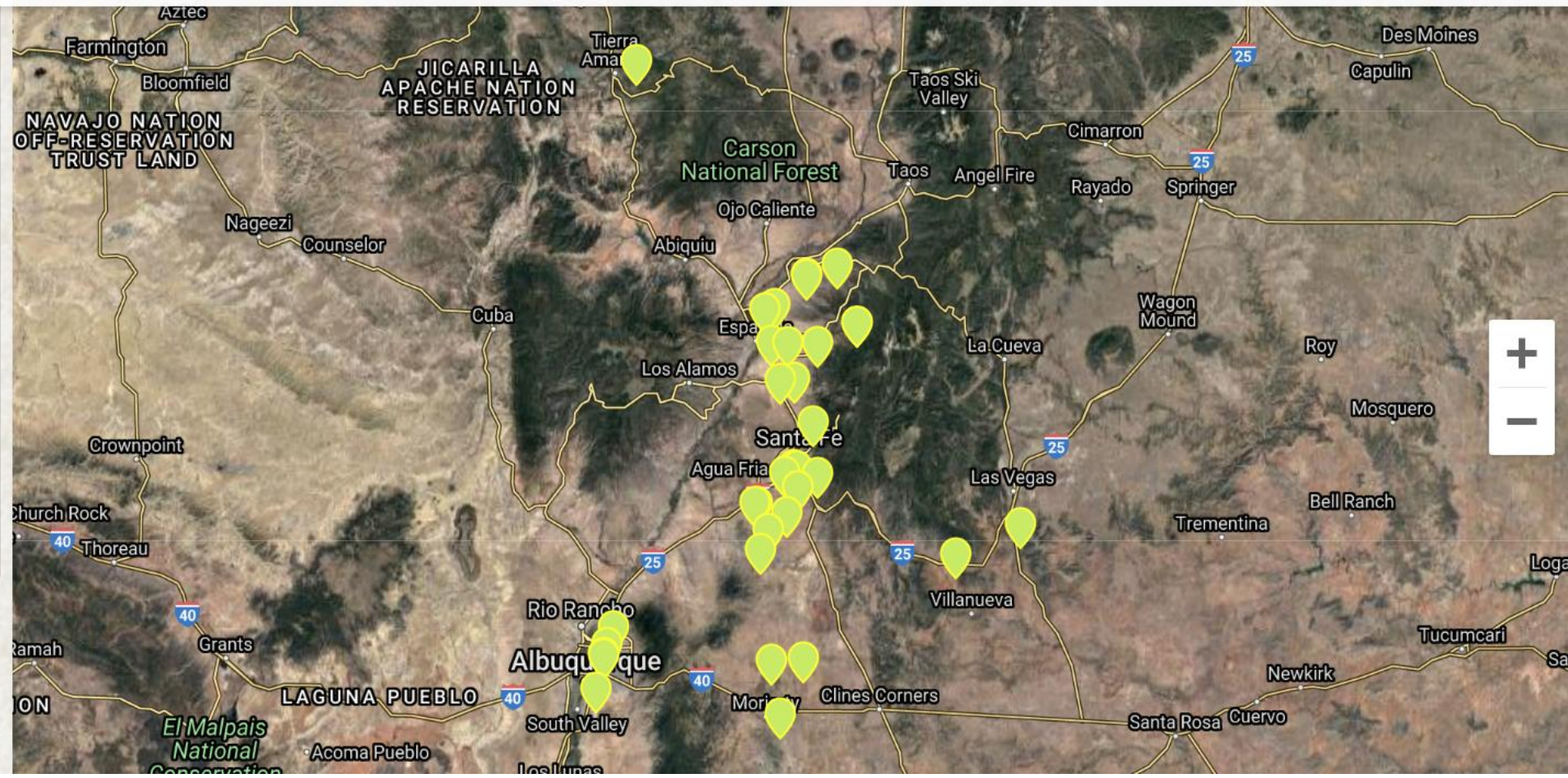
**BODHI FARMS »**

Las Vegas, NM



**BUCKIN' BEE  
HONEY »**

Santa Fe, NM



## Other Resources for Agriculture

- Federal Coronavirus Food Assistance Program offers direct relief to farmers
  - <https://www.farmers.gov/cfap>
- Business and Industry CARES Act Program
  - <https://www.rd.usda.gov/programs-services/business-and-industry-cares-act-program>
- USDA Rural Development Resource Guide
  - <https://rd.usda.gov/coronavirus>
- Local Food Chain Response Fund
  - <https://farmersmarketsnm.org/>



# Alex Fitzgerald

## Economic Development Specialist

- Economic and Business Development
- [amfitzgerald@santafecountynm.gov](mailto:amfitzgerald@santafecountynm.gov)
- (505) 986-6349

# Federal Financial Resources for Small Businesses

- Paycheck Protection Program (August 8<sup>th</sup>)
  - Loans to maintain employment during pandemic
  - <https://www.sba.gov/funding-programs/loans/coronavirus-relief-options/paycheck-protection-program>
- CARES Act: Economic Injury Disaster Loans and Advance
  - \$10k cash advance and loans for Covid-19 impacted businesses
  - <https://covid19relief.sba.gov/#/>

# State Financial Resources for Small Businesses

- NM Small Business Investment Council (NMSBIC) Small Business Loans
  - Low interest loans for small business
  - Contact partner organizations:
    - The Loan Fund; [www.loanfund.org](http://www.loanfund.org), call (505) 243-3196 or [info@loanfund.org](mailto:info@loanfund.org)
    - DreamSpring; [www.dreamspring.org](http://www.dreamspring.org), call (800) 508-7624 or [info@dreamspring.org](mailto:info@dreamspring.org)
    - LiftFund; [www.liftfund.com](http://www.liftfund.com), call (888) 215-2373 or [info@liftfund.com](mailto:info@liftfund.com)
    - Homewise; [www.homewise.org](http://www.homewise.org), call (505) 469-6195 or [jgilligan@homewise.org](mailto:jgilligan@homewise.org)
- NM Small Business Recovery Program
  - Loans up to \$75,000 at an interest rate one-half of the Wall Street Journal prime rate on the day the loan is approved.
  - <https://www.nmfa.net/faqs>

## Reopening Guidelines for Businesses

- NM Covid-Safe Practices for Individuals and Employers
  - <https://www.newmexico.org/industry/rapid-response-covid-19/covid-safe-practices/>
- NM Safe Certified
  - Free certification program providing Covid-safe training to businesses
  - <https://nmsafecertified.org/get-certified/>
- Other Business Training
  - NMSBDC: <http://www.nmsbdc.org/>
  - SCORE: <https://santafe.score.org/>
  - WESST: <https://www.wesst.org/>

# Covid-Safe Practices for Individuals and Employers

## COVID-SAFE PRACTICES FOR ALL EMPLOYERS

Our businesses leaders have shown great determination and leadership in the face of the extraordinary hardship caused by COVID-19. As the economy reopens, we are asking for your help to ensure all New Mexicans—your customers, employees, and families—take precautions to remain safe when entering a place of business. Please help us set the highest standards for living with COVID-19 by enacting these requirements and additional best practices.

### Required

- ☐ Limit operations to remote work to the greatest extent possible.
- ☐ Arrange workplace to provide for 6 feet of distance between individuals wherever possible.
- ☐ Close common areas where personnel are likely to congregate wherever possible or modify them to minimize contact.
- ☐ Provide for all meetings to take place remotely whenever possible.
- ☐ Ensure all employees have face coverings or masks and wear them in the workplace at all times when in the presence of others, except when eating, drinking or exercising, or unless otherwise advised by a health care provider.
- ☐ Train all employees on daily cleaning and disinfecting protocol, hygiene, and respiratory etiquette (e.g., covering coughs).
- ☐ Make handwashing, sanitizer, and other hygiene support available to employees.  
**Note:** the use of gloves is not a substitute for frequent handwashing.
- ☐ Screen employees before they enter the workplace each day (verbally or with a written form or text-based or other app). Send employees home who are experiencing the following COVID-19 symptoms related to COVID-19 and direct them to obtain free testing through the [Department of Health](#).

<input type="checkbox"/> Fever	<input type="checkbox"/> Sore throat	<input type="checkbox"/> Chills
<input type="checkbox"/> Cough	<input type="checkbox"/> Headache	<input type="checkbox"/> Repeated shaking with chills
<input type="checkbox"/> Shortness of breath	<input type="checkbox"/> Muscle pain	<input type="checkbox"/> Loss of taste or smell



# Other Economic Development Resources

- Main Street Lending Program
  - <https://www.bostonfed.org/supervision-and-regulation/supervision/special-facilities/main-street-lending-program.aspx>
- SBA Express Bridge Loans
  - <https://www.sba.gov/funding-programs/loans/coronavirus-relief-options/sba-express-bridge-loans>
- SBA Debt Relief
  - <https://www.sba.gov/funding-programs/loans/coronavirus-relief-options/sba-debt-relief>
- Manufacturing Extension Program
  - <https://www.imec.org/supplier-scouting/>
- LISC small business assistance
  - <https://www.lisc.org/covid-19/small-business-assistance/small-business-relief-grants/frequently-asked-questions/>
- All Together NM Fund
  - <https://www.alltogethernm.org/apply>
- Momentum Fund for local non-profits
  - <https://www.unitedphilforum.org/momentum-fund>
- NM Humanities Council CARES Act Grant Application
  - <https://nmhum.org/NMHC.php?c=1523>
- NMEDD COVID-19 Business Loan Guarantee Loan Program
  - <https://gonm.biz/about-us/covid-19-response/business-loan-guarantee-program-lenders-apply>



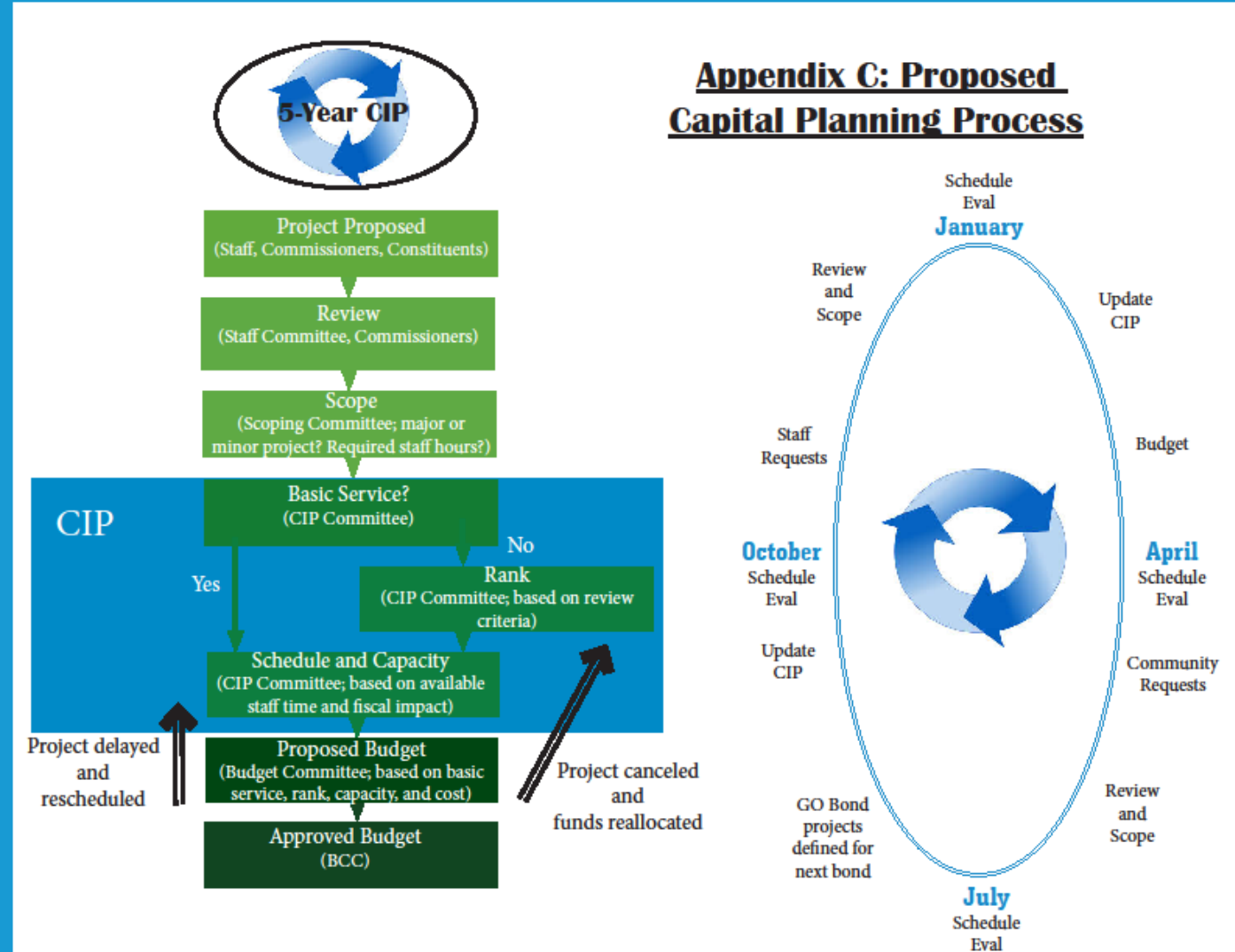
## Jacob Stock, Community Planner

- Capital and Infrastructure Planning
- [jstock@santafecountynm.gov](mailto:jstock@santafecountynm.gov)
- (505) 995-2737

# Santa Fe County Capital Improvement Plan

- County's program for planning, funding, and executing public infrastructure
- Eligible projects are considered for funding via Capital Outlay GRT, GO Bonds, and other sources
- Must be a capitalized County-owned asset to qualify
- Complete a Capital Project Request form to initiate a proposal
- View a detailed slide presentation and download a capital project request form at [https://www.santafecountynm.gov/growth\\_management/planning/capital\\_planning](https://www.santafecountynm.gov/growth_management/planning/capital_planning)

# Capital Planning Process



# Capital Resources for Community Water Infrastructure

- Clean Water State Revolving Fund
  - Provides grants and loans for a range of wastewater and storm water projects
  - <https://www.env.nm.gov/construction-programs/clean-water-state-revolving-fund-cwsrf/>
- Water Project Fund
  - Grants and loans for water conservation, treatment, reuse, and recycling; flood prevention; ESA collaborations; storage, conveyance, and delivery; Watershed restoration and management
  - <https://www.nmfa.net/financing/water-programs/water-project-fund/>

## Other Community Infrastructure Resources

- Public Project Revolving Fund Loan
  - <https://www.nmfa.net/financing/public-project-revolving-fund/about-the-pprf-program/>
- NMDOT Bonds
  - <https://www.nmfa.net/financing/nm-department-of-transportation-bonds/about-nmdot-bonds/>



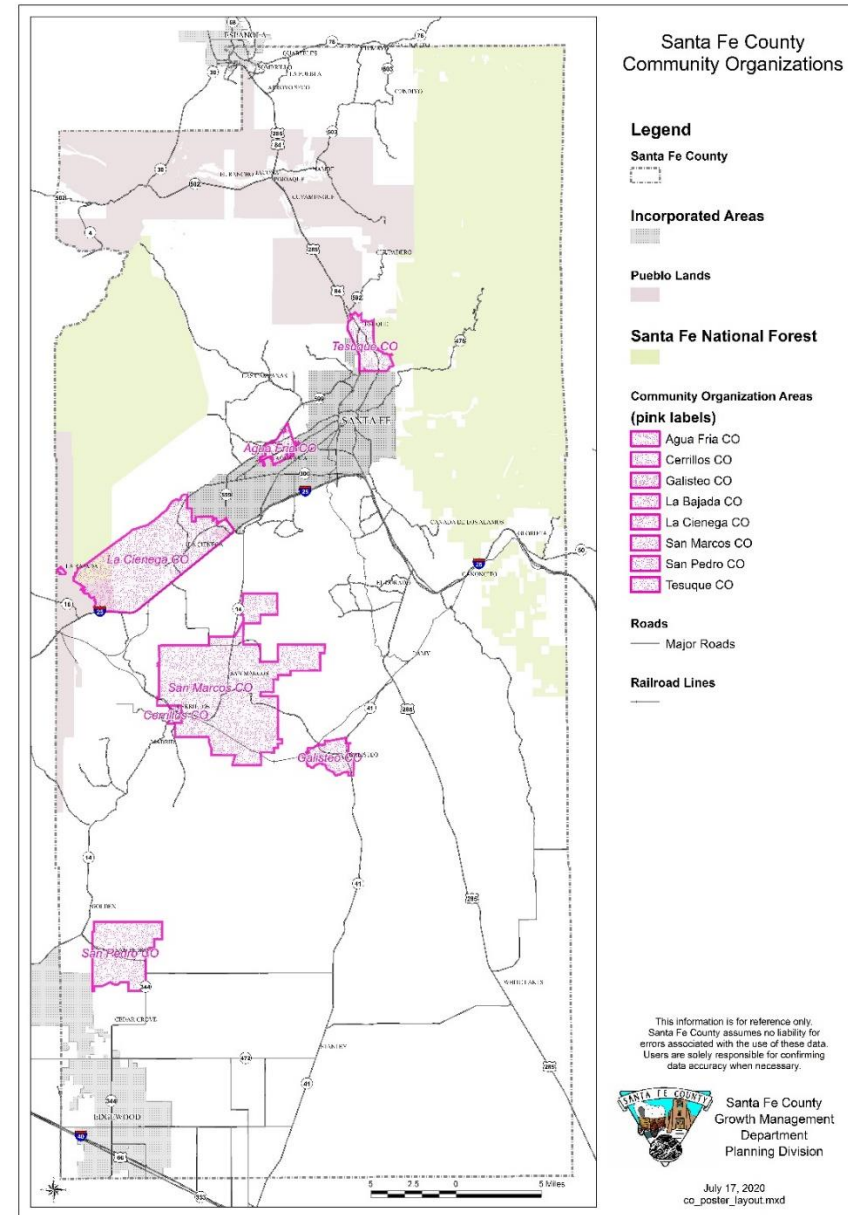
## Sonora Rodriguez, Community Planner

- Community Planning and Public Participation
- [srodriguez@santafecountynm.gov](mailto:srodriguez@santafecountynm.gov)
- (505) 995-2717

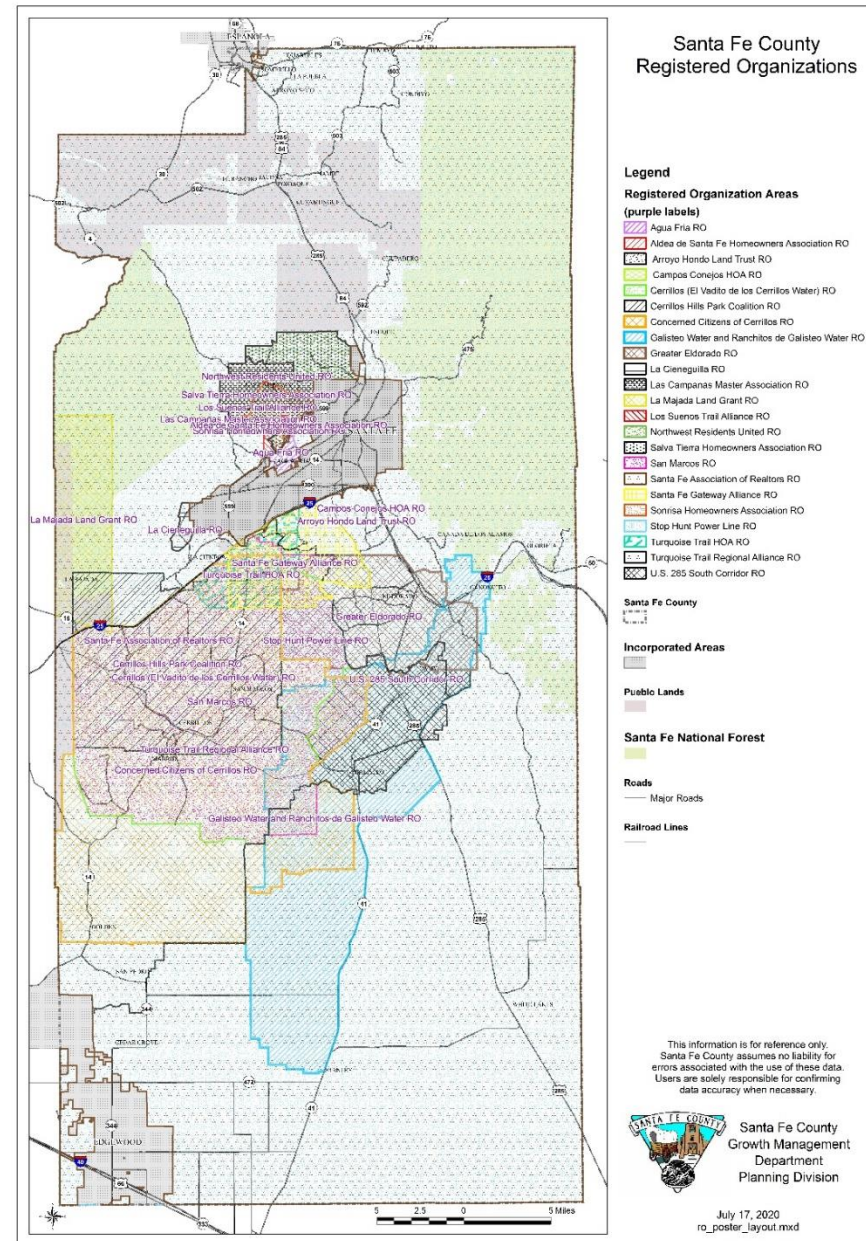
## Community Organizations (COs) and Registered Organizations (ROs)

- The Community Organization and Registered Organization (CO/RO) program was established to broaden public participation with respect to community development issues
- Program has grown to incorporate HOAs, professional associations, recreational groups, and representative organizations for the various communities – 25 ROs, 8 COs
- CO/RO Program next phase will provide additional outreach to enhance participation by diverse areas and socioeconomic groups
- [https://www.santafecountynm.gov/slhc/coro\\_program](https://www.santafecountynm.gov/slhc/coro_program)

# Community Organizations (COs)



# Registered Organizations (ROs)



## Questions and Discussion

- Community Support and Agriculture
  - Lucy Foma; [lfoma@santafecountynm.gov](mailto:lfoma@santafecountynm.gov); (505) 995-2735
- Economic and Business Development
  - Alex Fitzgerald; [amfitzgerald@santafecountynm.gov](mailto:amfitzgerald@santafecountynm.gov); (505) 986-6349
- Community Infrastructure Development
  - Jacob Stock; [jstock@santafecountynm.gov](mailto:jstock@santafecountynm.gov); (505) 995-2737
- Community Organizations and Registered Organizations
  - Sonora Rodriguez; [srodriguez@santafecountynm.gov](mailto:srodriguez@santafecountynm.gov); (505) 995-2717